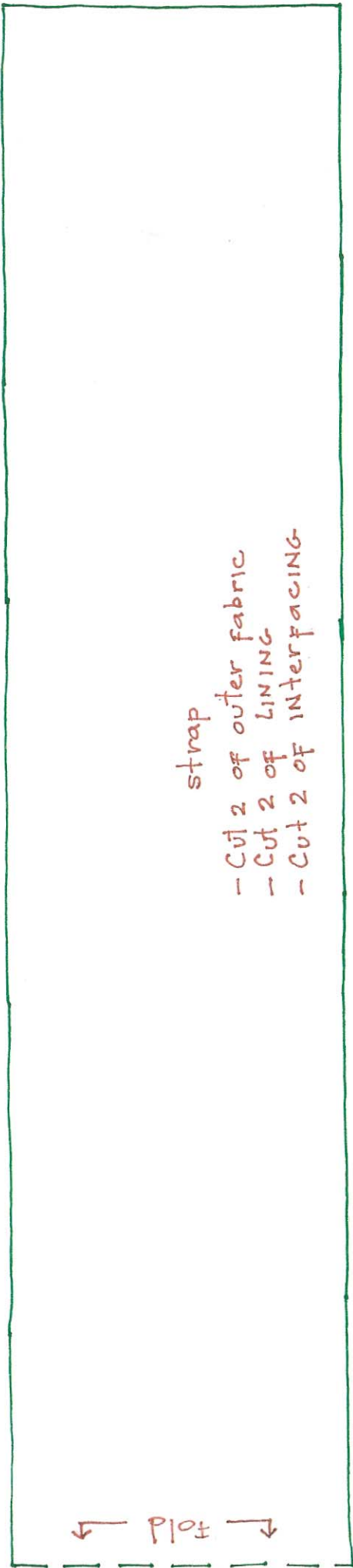


↑
Top

← Fold →

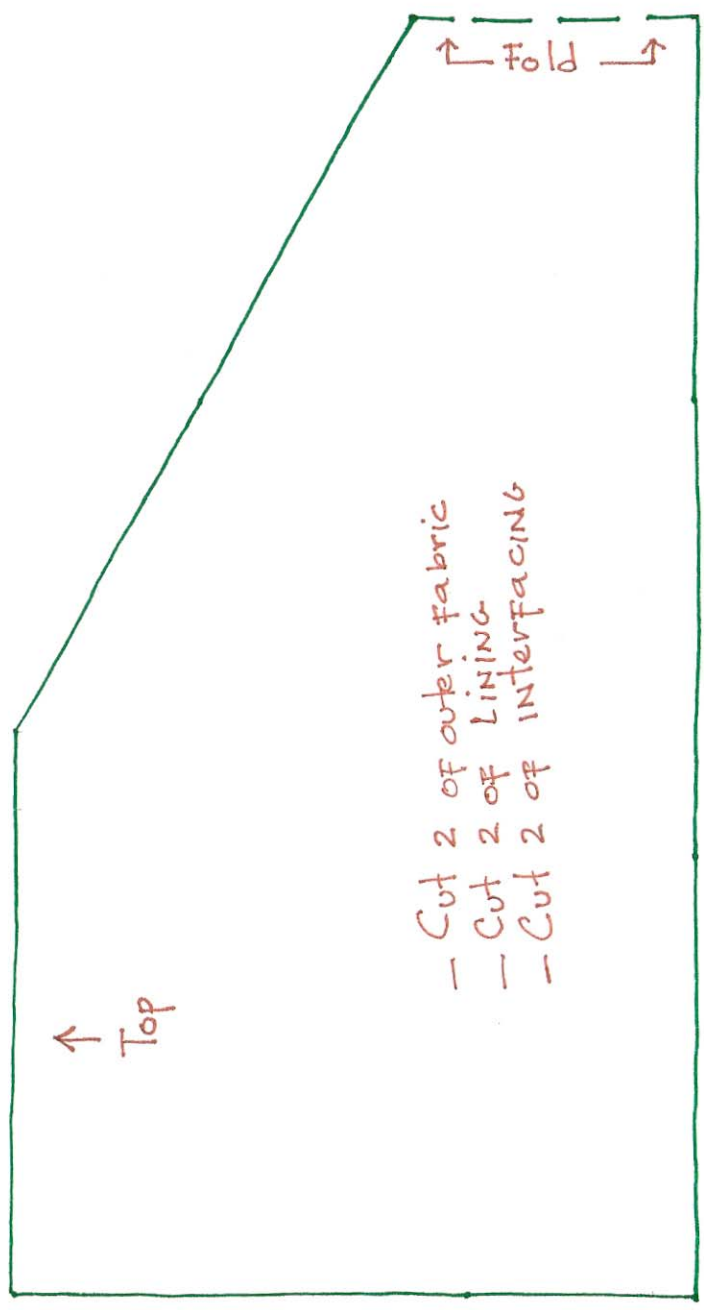
- Body part A
- Cut 2 of outer fabric
 - Cut 2 of lining
 - Cut 2 of interfacing

← wedge



strap
- Cut 2 of outer fabric
- Cut 2 of LINING
- Cut 2 of INTERFACING

Fold



- Cut 2 of outer fabric
- Cut 2 of LINING
- Cut 2 of INTERFACING

Top

Fold